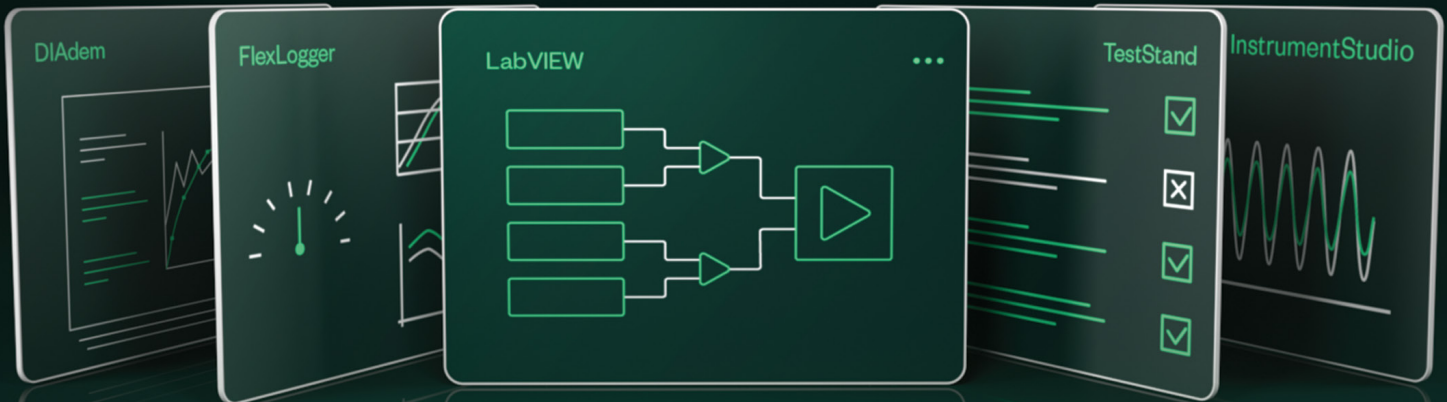




NI is now part of Emerson.



# NI LabVIEW+ Suite

## Add Software, Subtract Inefficiencies

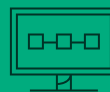
### Engineers Already Trust LabVIEW

LabVIEW is a graphical programming environment engineers use to develop automated research, validation, and production test systems. It's designed for engineers, and has what you need to go fast.



#### Automate Measurement

Connect to any piece of hardware with drivers for NI and other vendor instruments.



#### Program Graphically

Develop your test system with a natural flowchart-like data flow.



#### Create User Interfaces

Build UIs with prebuilt objects for real-time data display, user input, and interactive analysis.



#### Integrate Other Languages

Call code written in Python, C, MathWorks® MATLAB®, or .NET.

Companies that standardize on LabVIEW benefit from improvements in development time, test coverage, and code reuse.

# Get More Software with the LabVIEW+ Suite

It's more affordable, with up to 60% in savings.

The LabVIEW+ Suite is a bundle of LabVIEW *plus*, TestStand, DIAdem, and FlexLogger™ software. The suite saves engineers time by providing purpose-built tools for measurement, analysis, and test.

Test architects get more engineering software to build better automated test systems, faster. LabVIEW has increased engineer's productivity for more than 35 years, and the LabVIEW+ Suite will continue to do that and more.

See how the LabVIEW+ Suite can help you:

## Measure

### Take a Quick Measurement

- Configure NI hardware channels for sensor, analog, and digital signals
- Interactively set up PXI instruments and debug unexpected behavior

Powered by:



## Test

### Optimize Test for Validation and Production

- Create test sequences with code from LabVIEW, Python, C/C++, and .NET
- Track units and automatically store test results to your database

Powered by:



## Analyze

### Interactively Analyze Data

- Use built-in engineering analysis functions for calculations
- View any type of data, quickly and all at once, with segmented displays

Powered by:



### Create and Share Reports

- Drag-and-drop to graphics to create shareable reports for your team or organization
- Automate your postprocessing routine with VBS or Python

Powered by:



LabVIEW



TestStand



G Web Development Software



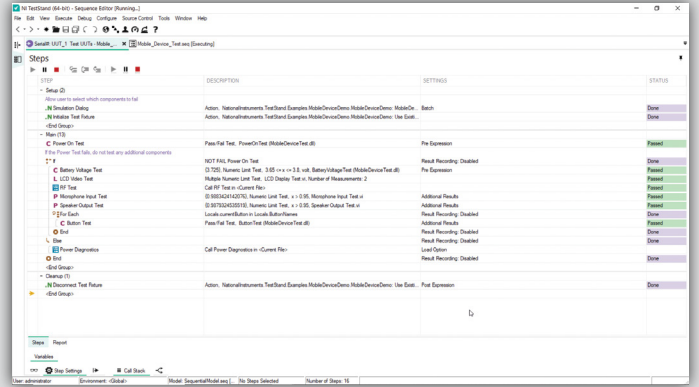
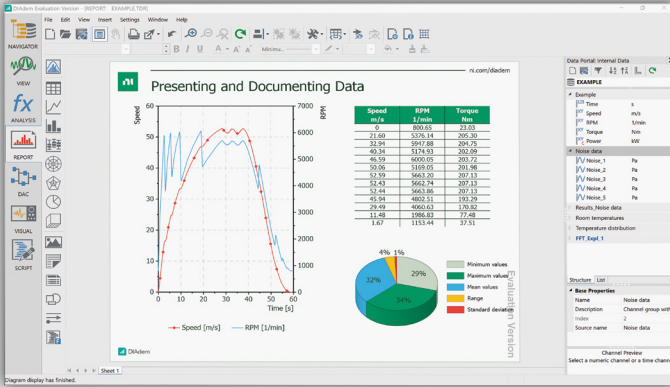
DIAdem



FlexLogger™



InstrumentStudio™



“We have reduced our reporting and analysis time by 95 percent and achieved our goal of replacing the current multistep process with a one-button DIAdem solution.”

Jim Knuff,  
Raytheon Missile Systems

“Using NI TestStand and LabVIEW, we successfully converted a lengthy manual test process into a highly automated test cycle and reduced the regression test cycle from weeks to days, while increasing reliability, repeatability, and maintainability.”

Sambit Panigrahi,  
Texas Instruments

# The Benefits of LabVIEW Multiplied

It's LabVIEW, plus more! The suite amplifies the traditional benefits of LabVIEW by adding software that provides more time-savings and scalability resources. And by lowering the combined cost of purchase, bundled savings make it accessible. Experience the benefits:

### Reduce Development and Maintenance Time

The LabVIEW+ Suite saves you time with out-of-the-box software and features so that you don't need to build it all yourself. It's consistently improved and maintained by NI.

### Improve Data Analysis and Utilization

The LabVIEW+ Suite helps you gather insights from your data with built-in analysis tools. Share those insights with your team through native, simplified report configuration and automation.

### Future-Proof Your System

NI software is designed for today and tomorrow. The LabVIEW+ Suite works with other vendor instruments and popular programming languages such as Python, .NET, and C.

# Software Included in the LabVIEW+ Suite



## LabVIEW

Graphical programming environment for automating instruments



## DIAdem

Data analytics software for analyzing measurement data and creating reports



## TestStand

Test executive software for building validation and production test systems



## FlexLogger™

Configuration-based software for acquiring and logging data



## G Web Development Software

Graphical programming environment for developing web applications for test



## InstrumentStudio™

Interactive software for viewing and configuring devices

## Software Services

Get access to software training, dedicated support, and more with your software subscription:



Software Updates



Access to Previous Versions



Technical Support



Online Training



Deploy test sequences with custom operator interfaces with TestStand.



## Trinergy Instrument

Tel : 02-645-4588 | Email : [info@trinergy.co.th](mailto:info@trinergy.co.th)

Website : [www.trinergy.co.th](http://www.trinergy.co.th) | Line Official ID : @trinergy



@trinergy